

Station GAW-Name: Jungfrauoch  
Station GAW-ID: JFJ  
Station latitude: 46.5474891663  
Station longitude: 7.9850897789  
Station altitude: 3580m  
Station land use: Other  
Station setting: Mountain

Check the metadata:

<https://ebas-submit.nilu.no/templates/NOx/lev0>

NO data by CL Lev1

NO2 data by TDL Lev1

Metadata is needed for ozone effect correction residence time (Lev 0 data!)

Data cannot be corrected for offset changes (caterpillar emissions at night)

TC does Level 2 from Level 1

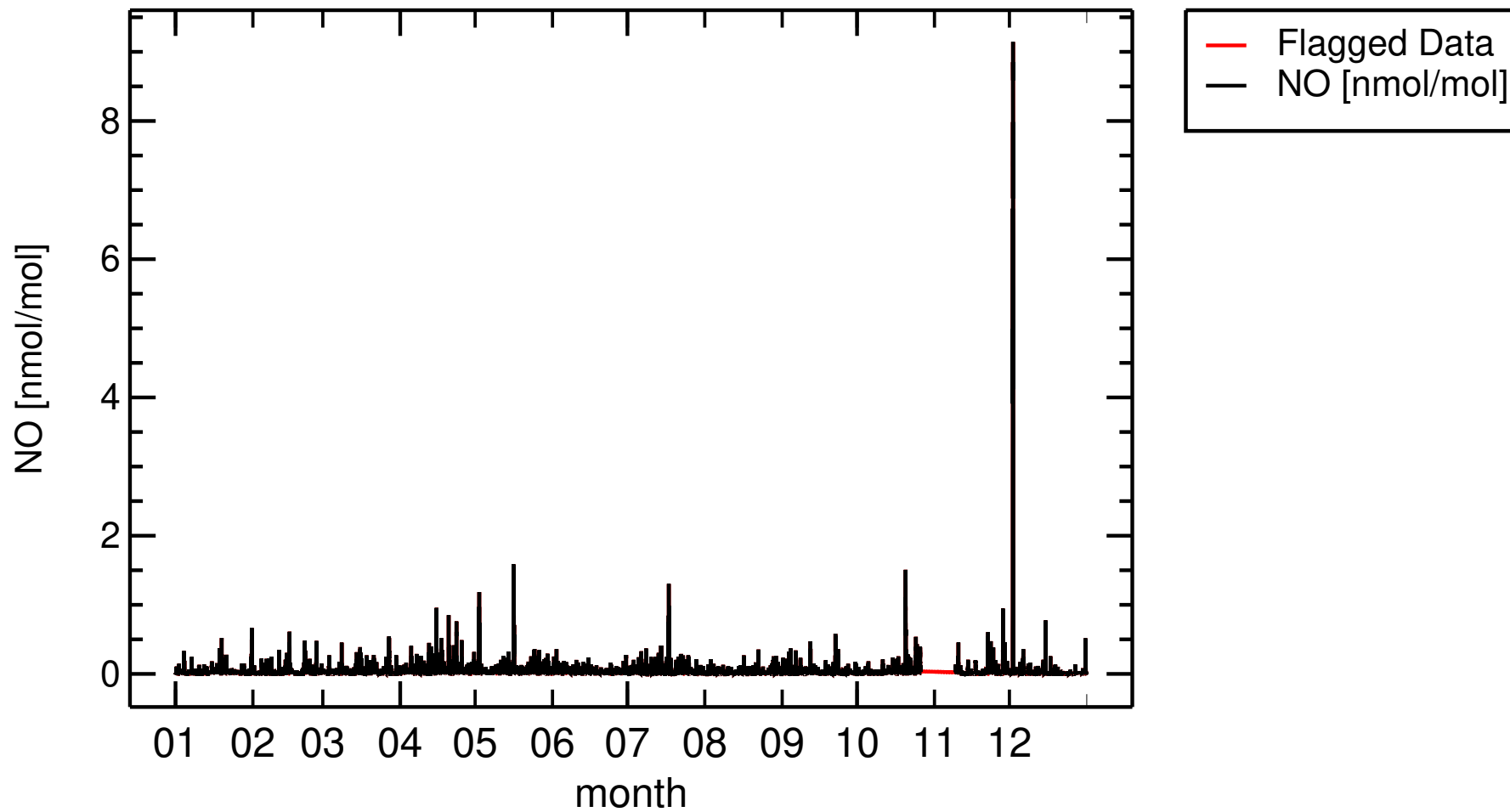
For Level 3 metadata in level 0 data is missing





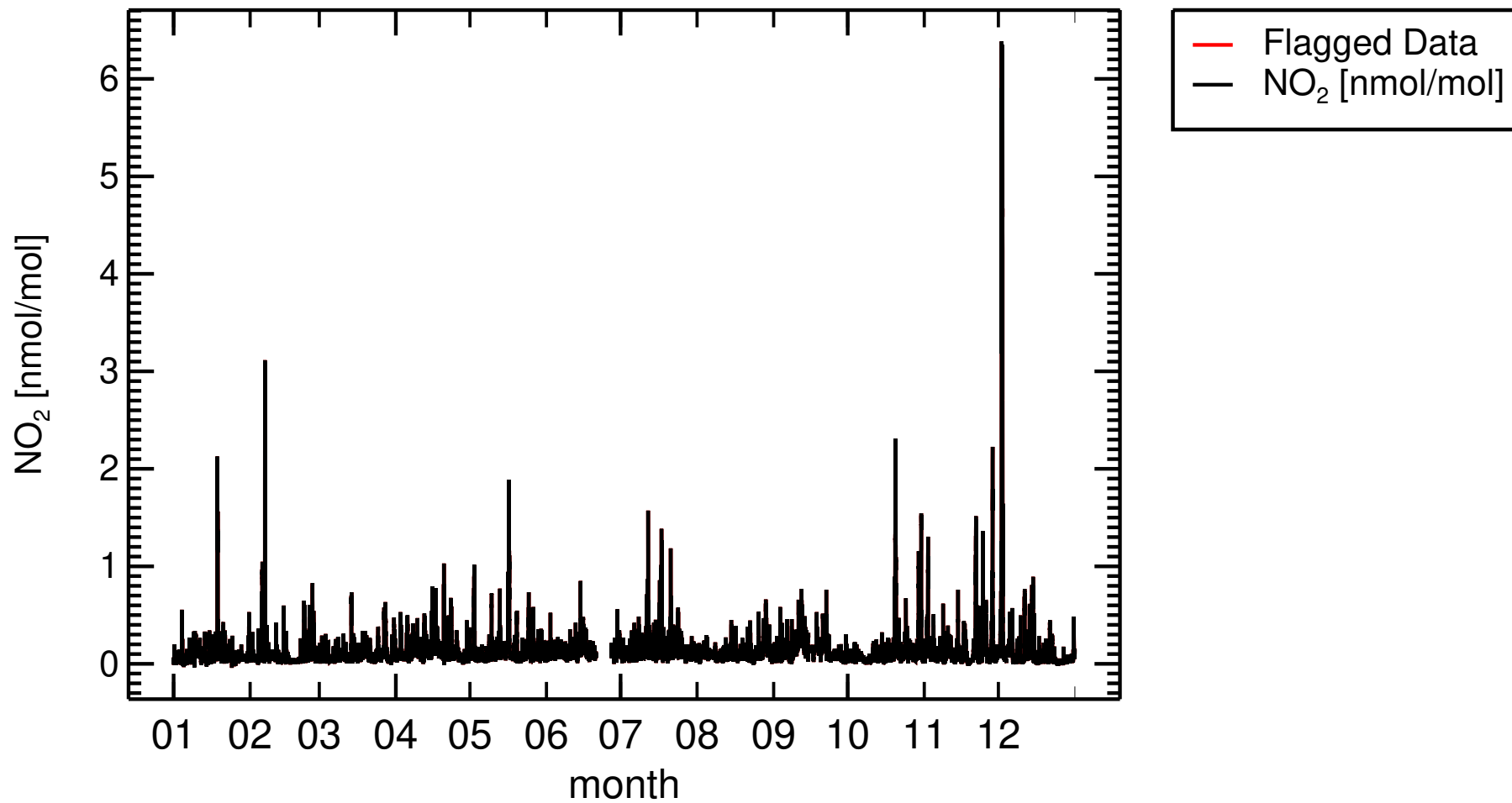
2023

CH0001G , Jungfrauojoch



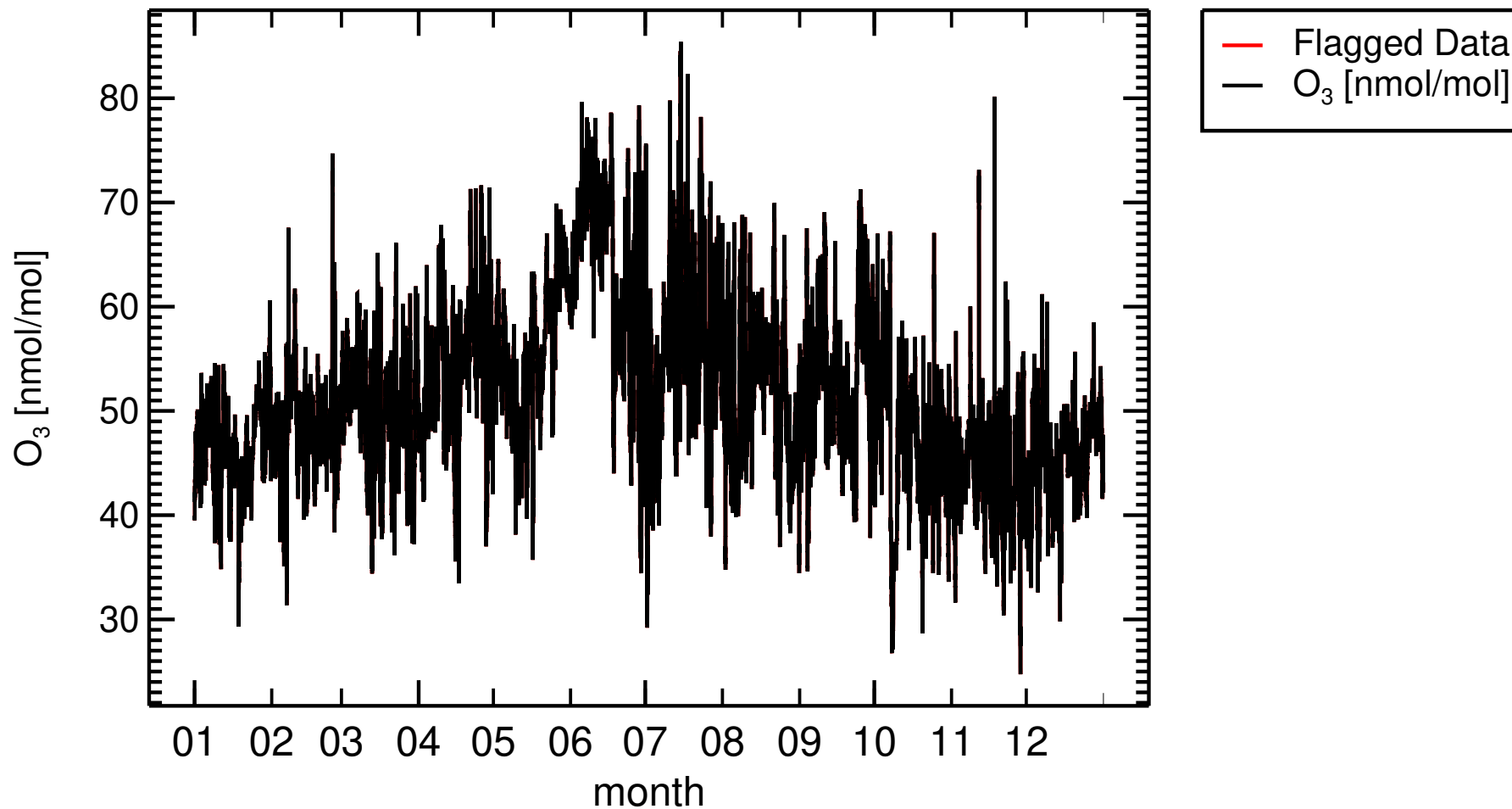
2023

CH0001G , Jungfrauojoch



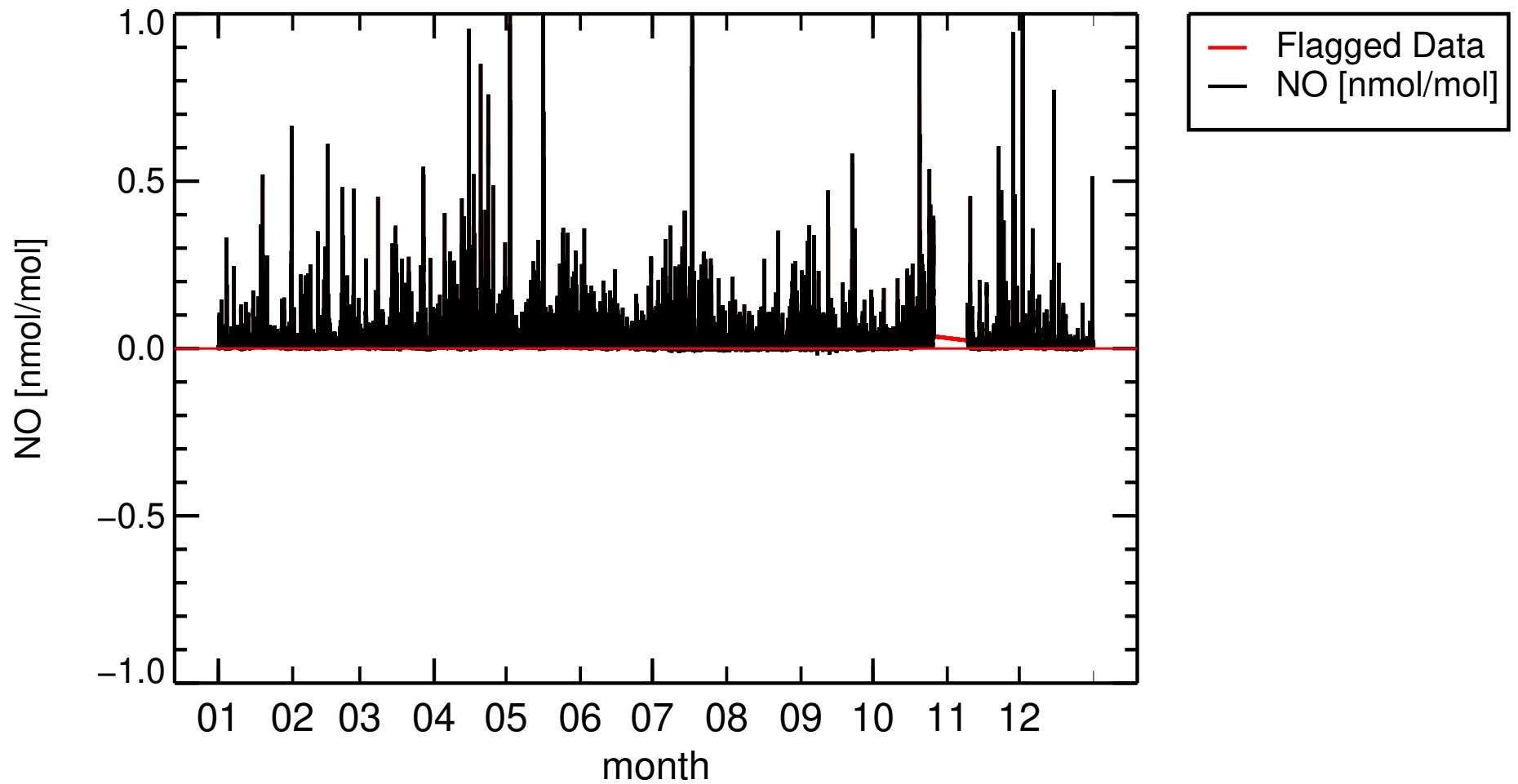
2023

CH0001G , Jungfrauojoch



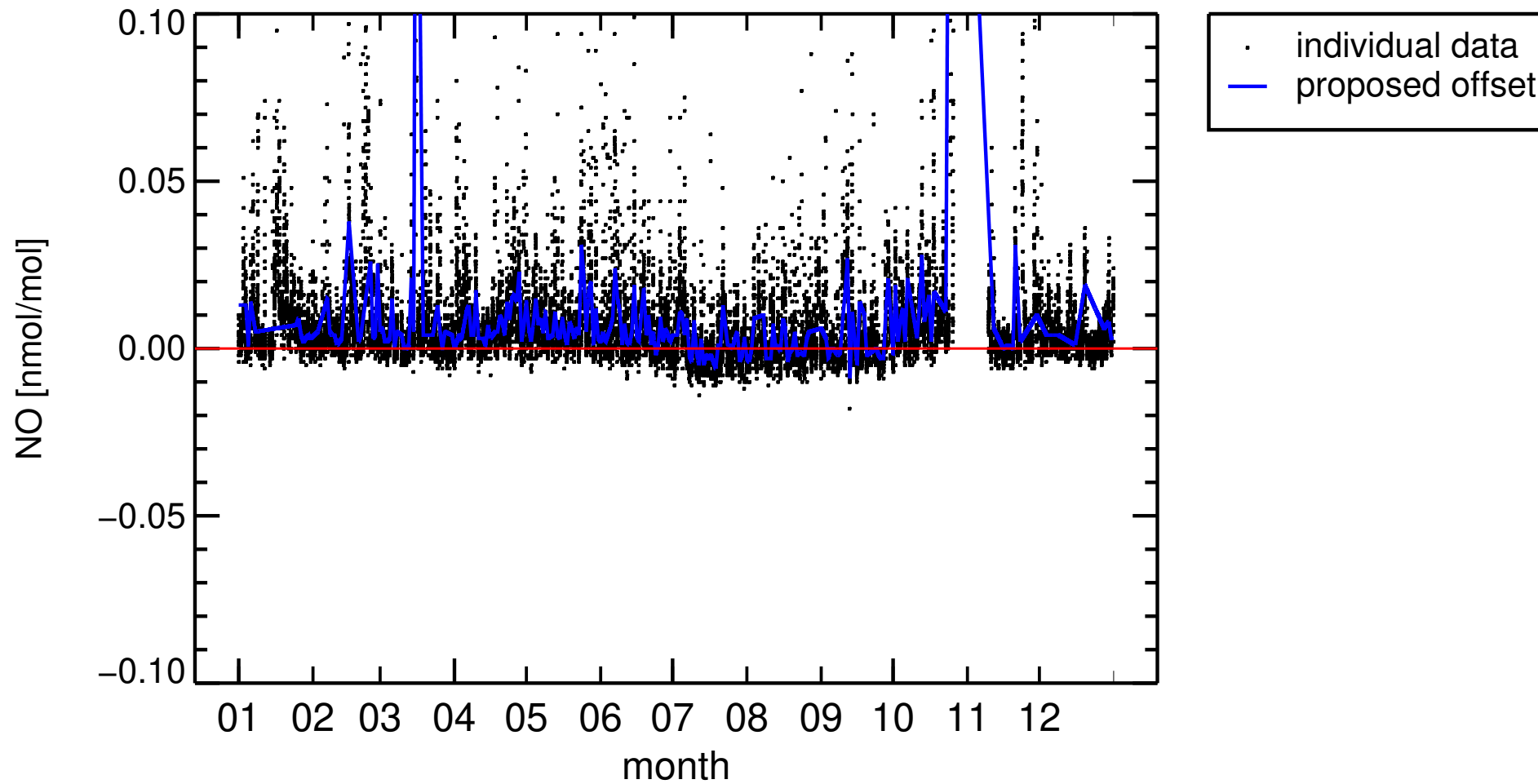
2023

CH0001G , Jungfrauoch



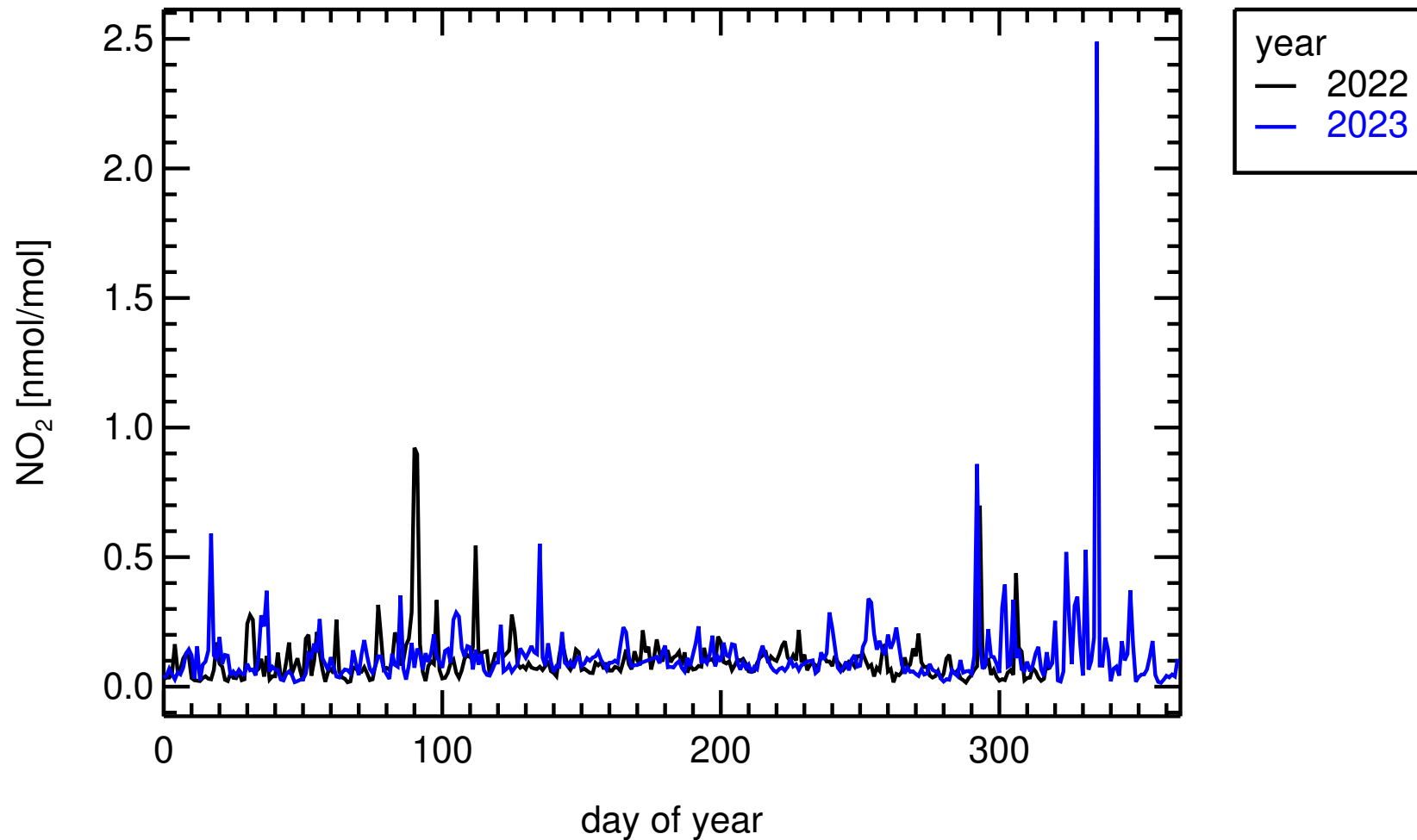
2023

CH0001G , Jungfraujoch



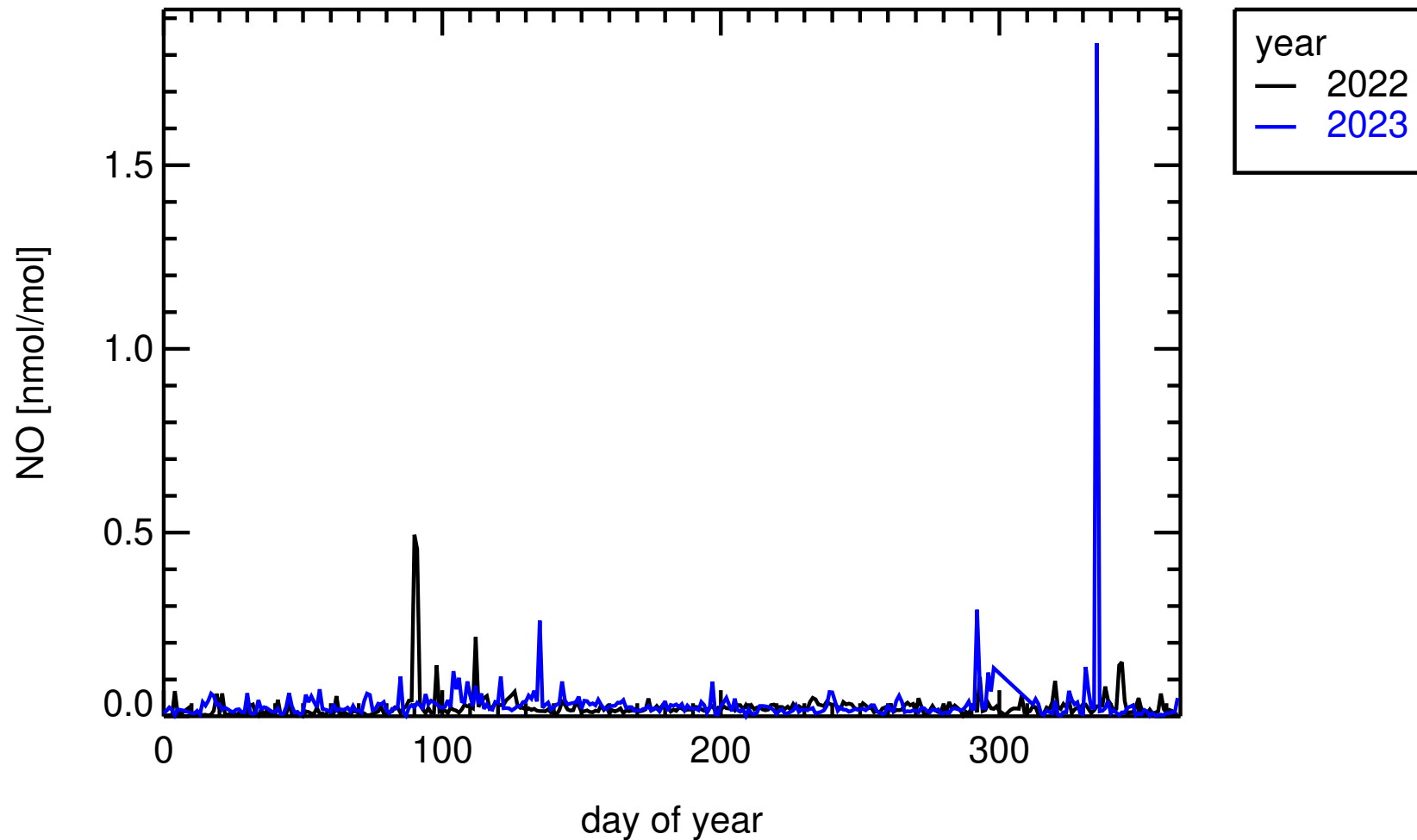


daily averages  
CH0001G , Jungfraujoch



nitrogen\_dioxide, nmol/mol, Calibration scale=NPL+GPT MEAN = NaN nmol/mol

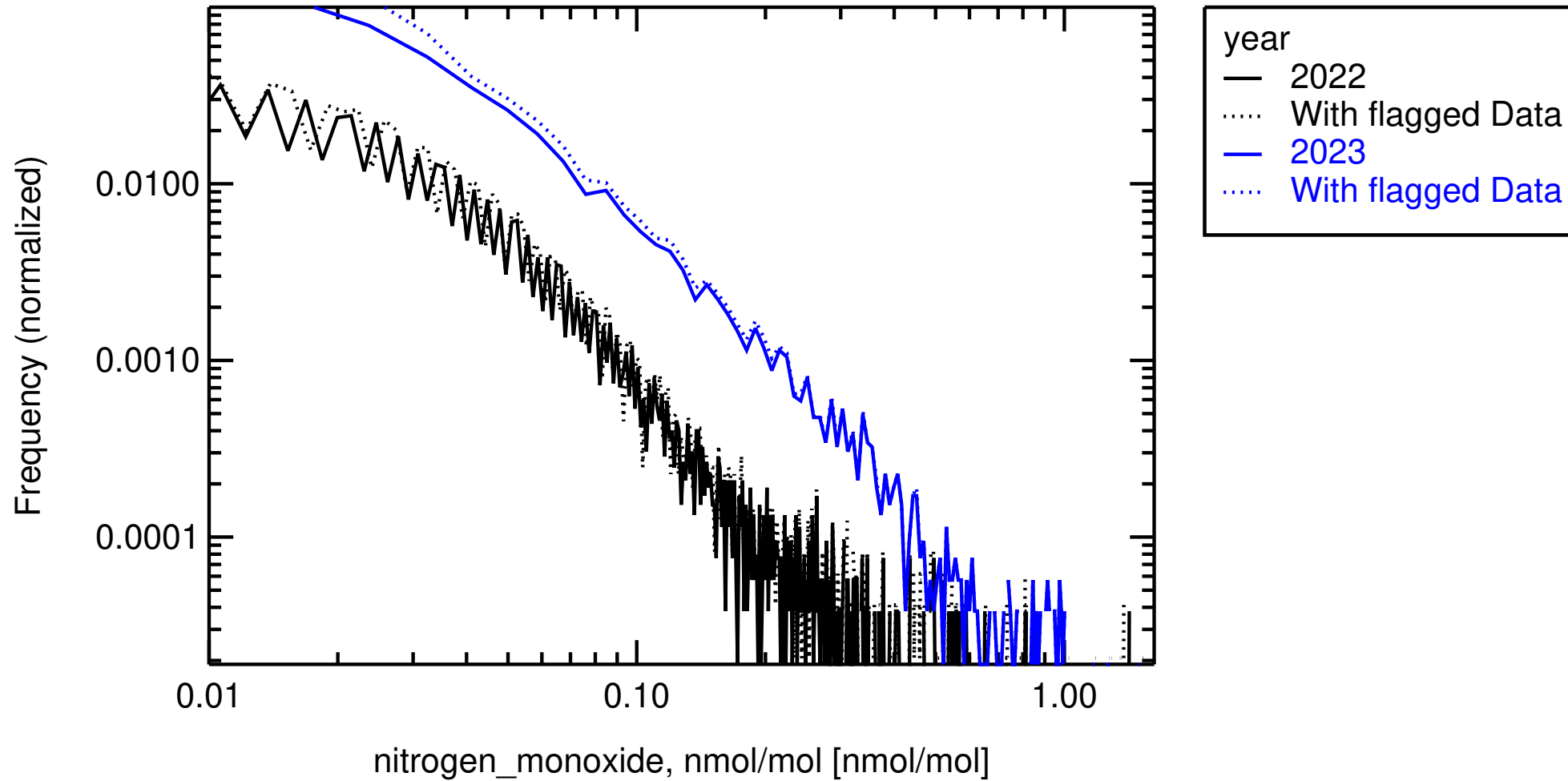
daily averages  
CH0001G , Jungfraujoch



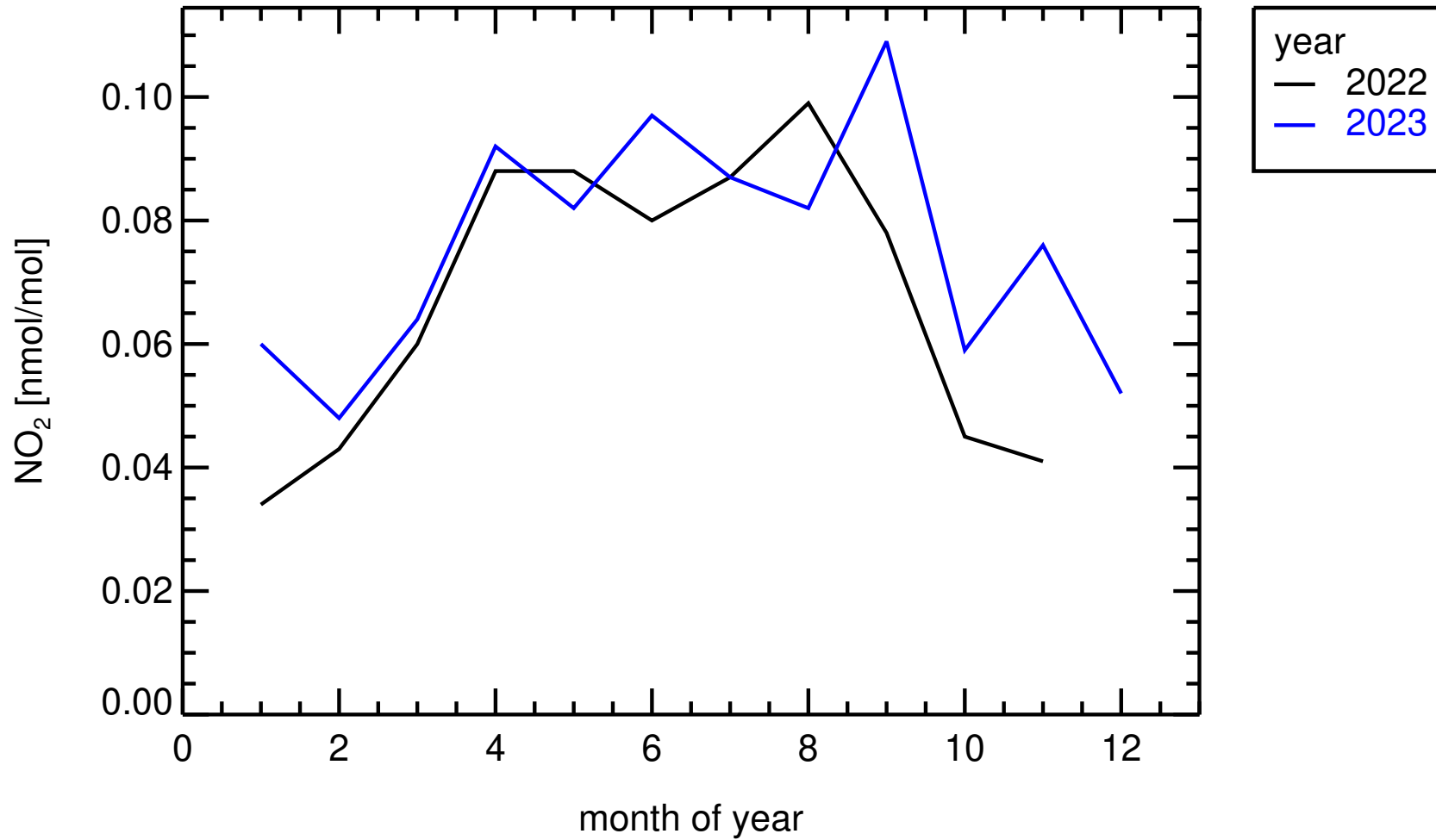
nitrogen\_monoxide, nmol/mol, Calibration scale=NPL MEAN = NaN nmol/mol

# Histogram

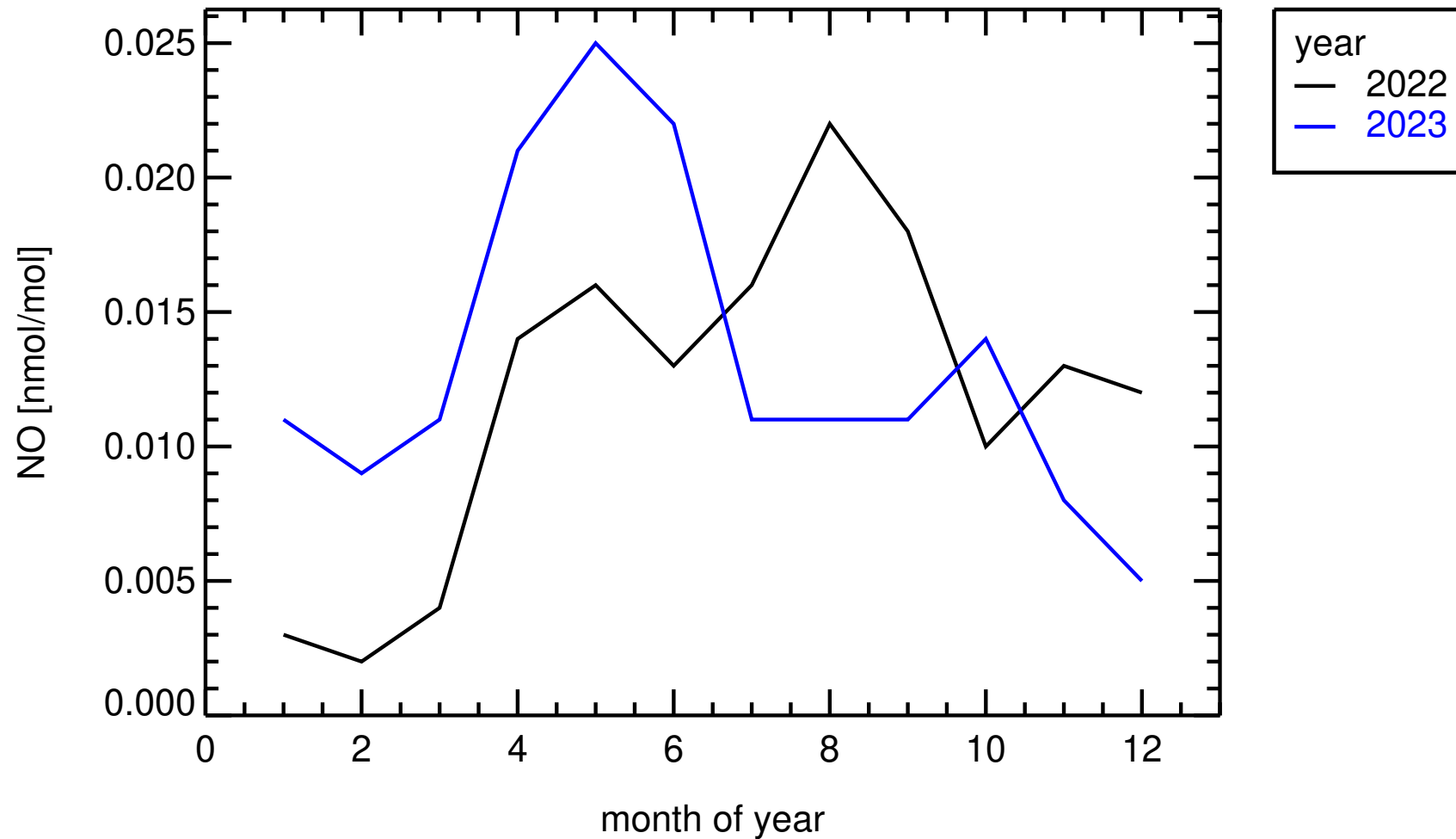
## CH0001G , Jungfrauojoch



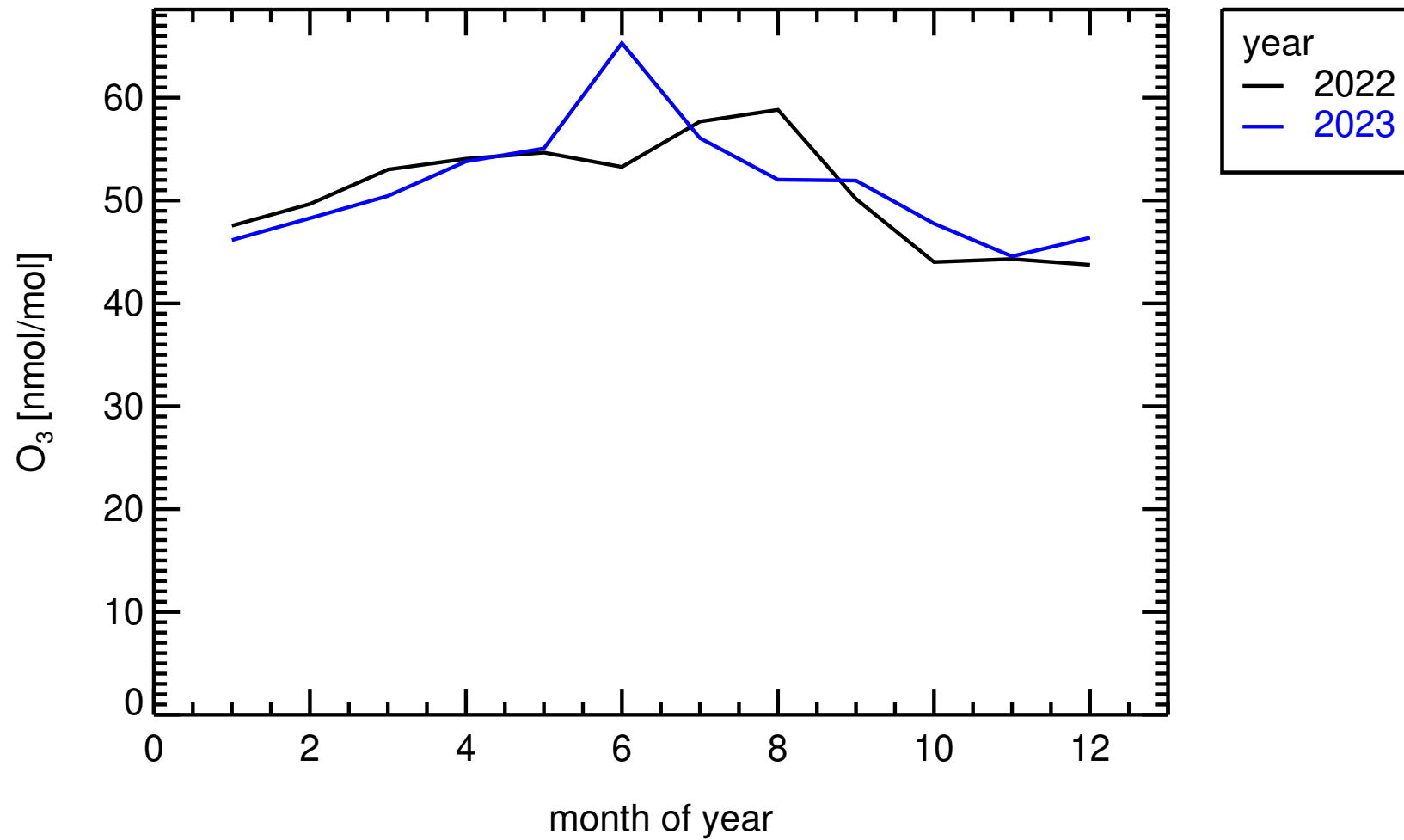
monthly medians  
CH0001G , Jungfrauoch



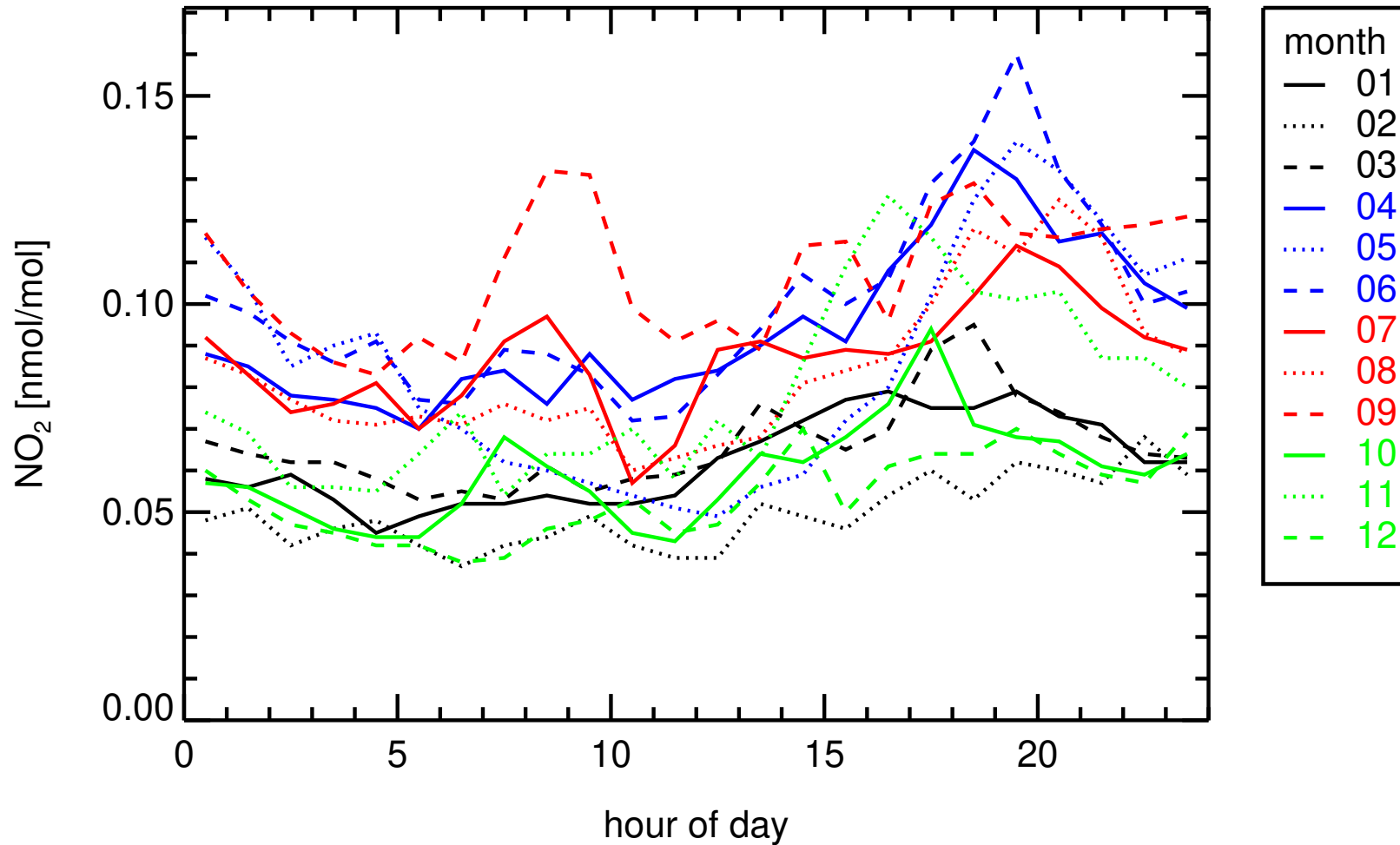
monthly medians  
CH0001G , Jungfrauoch



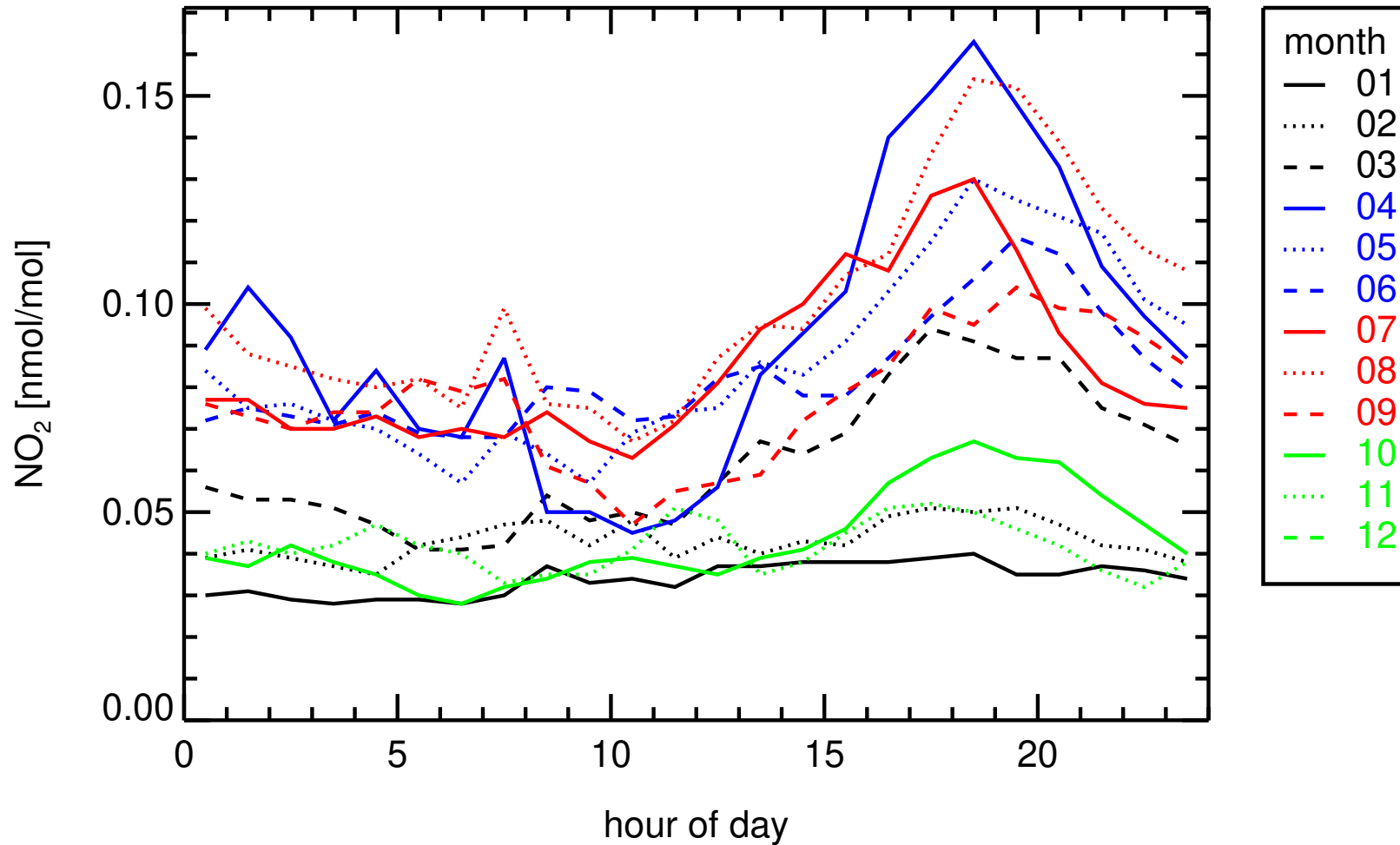
monthly medians  
CH0001G , Jungfraujoch



hourly medians 2023  
CH0001G , Jungfraujoch

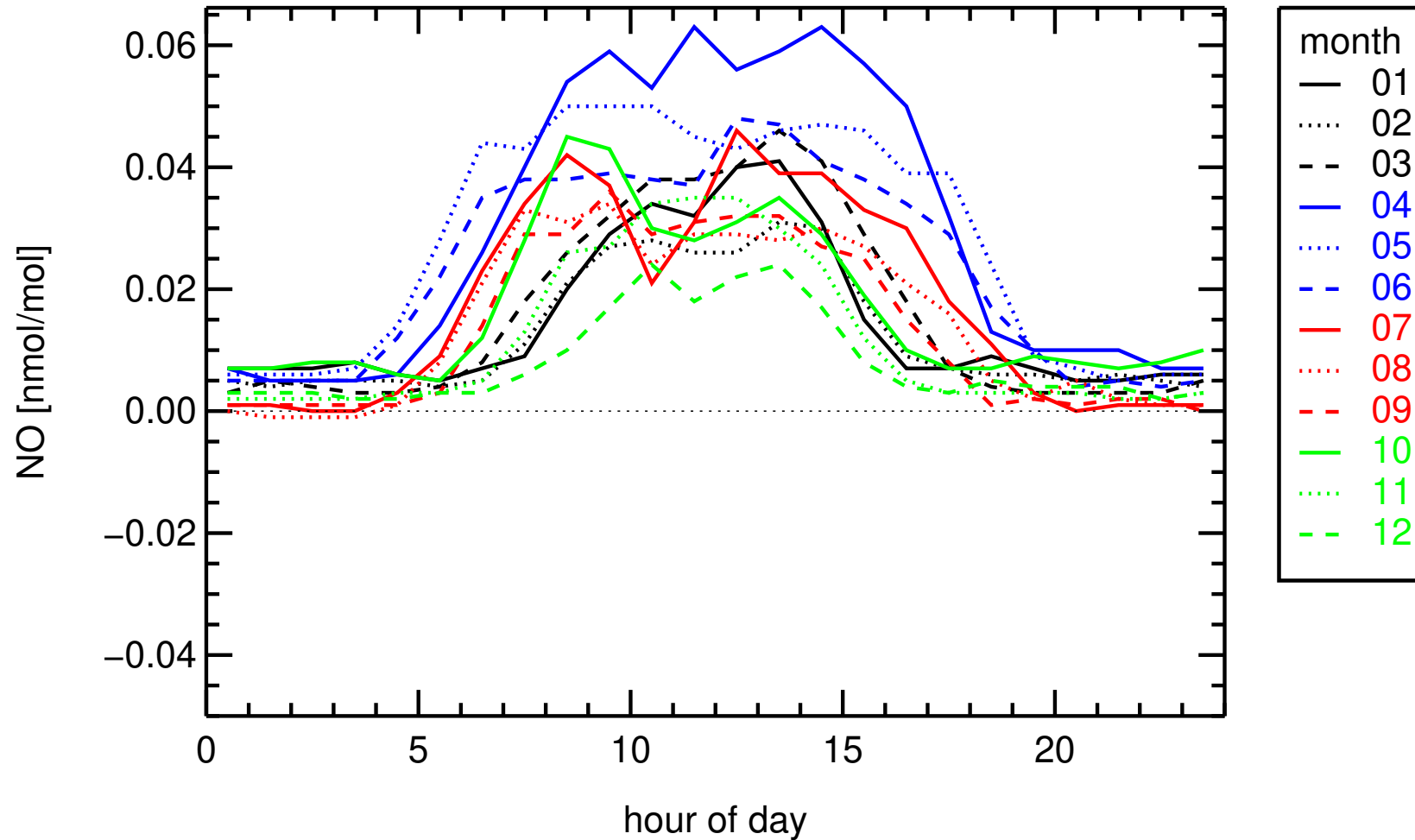


hourly medians 2022  
CH0001G , Jungfrauoch

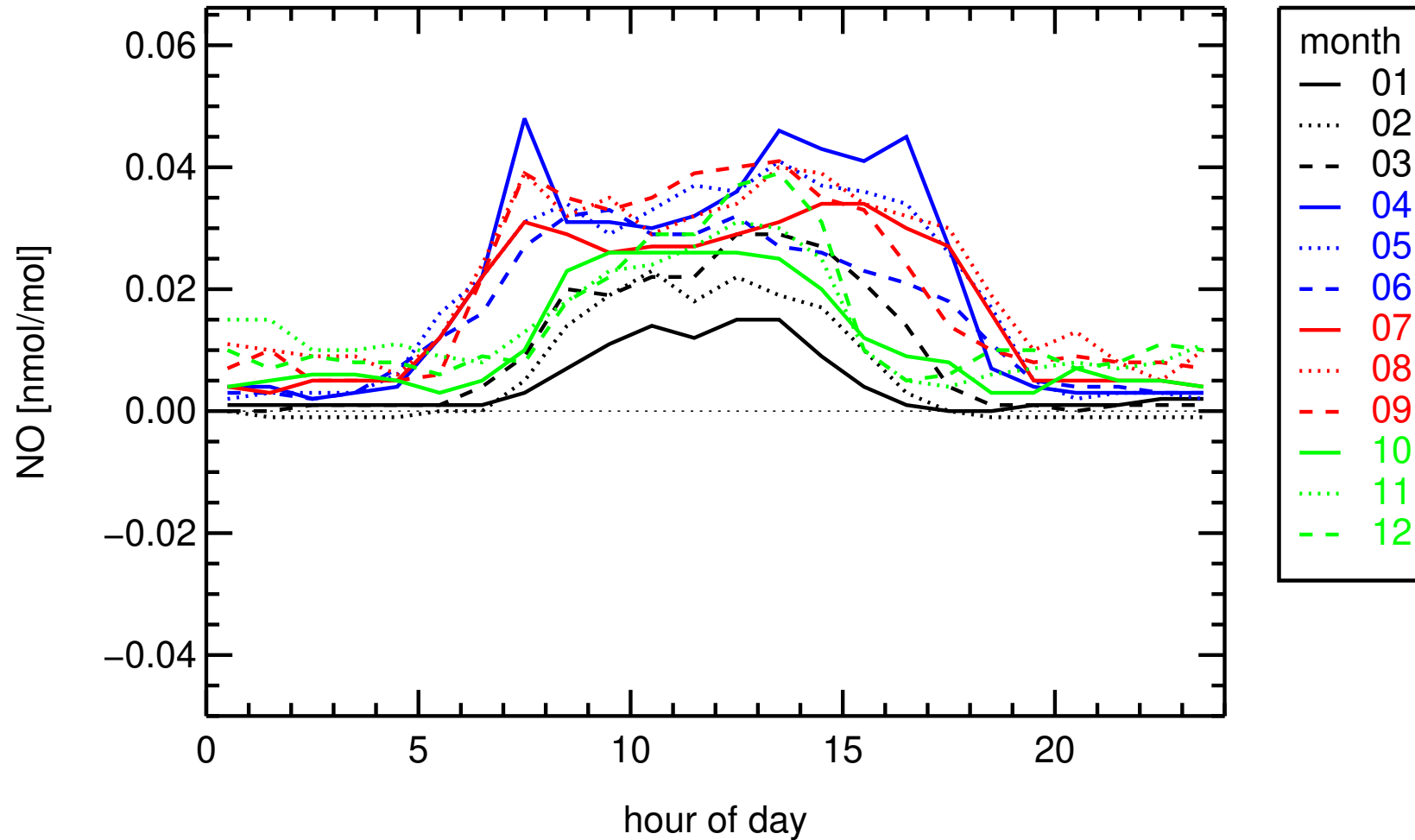




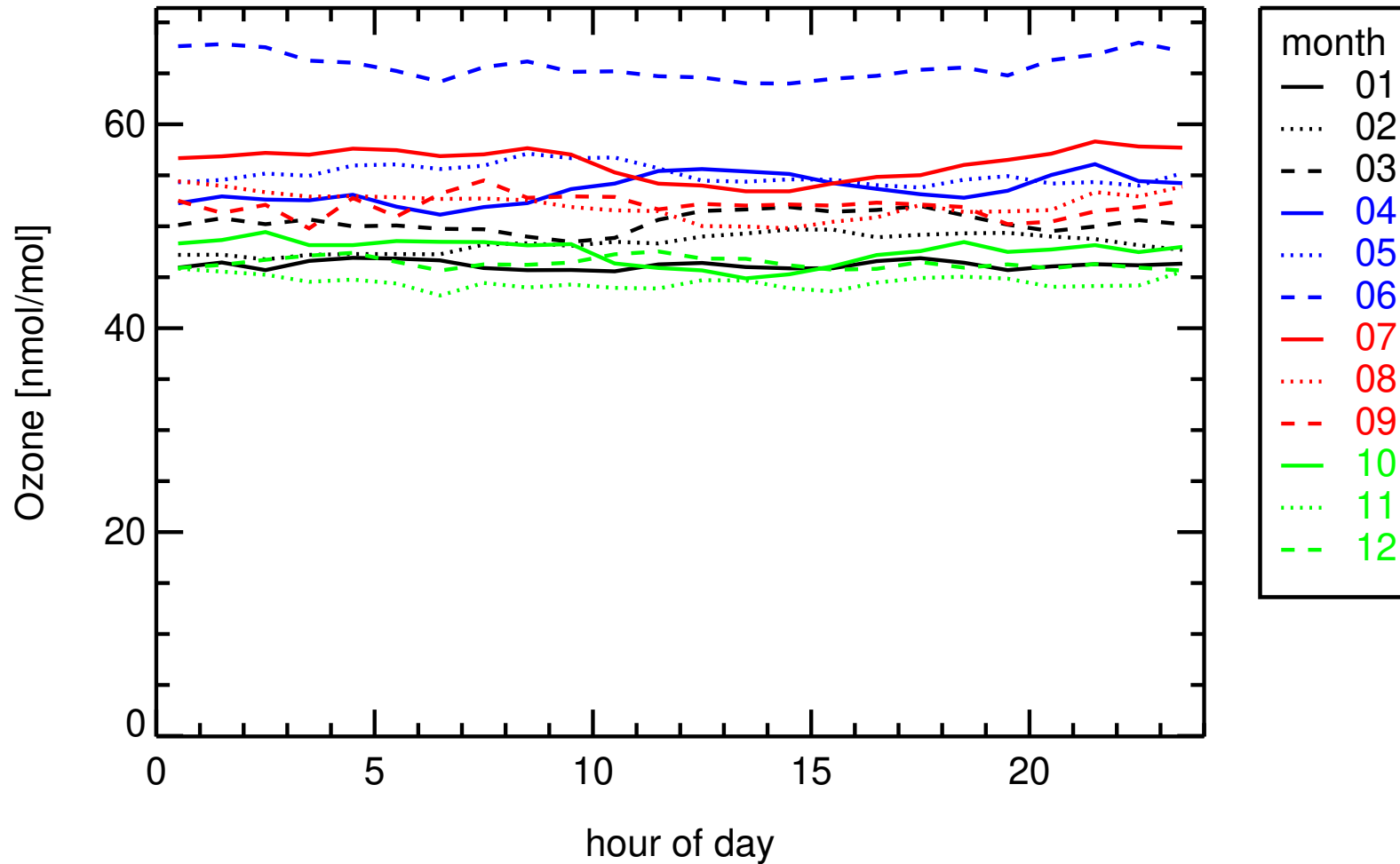
hourly medians 2023  
CH0001G , Jungfrauojoch



hourly medians 2022  
CH0001G , Jungfraujoch



hourly medians 2023  
CH0001G , Jungfraujoch



hourly medians 2022  
CH0001G , Jungfraujoch

